

KMT Robotic Solutions

RoboTrim® RT-1202

ROUTER TRIMMING SYSTEM

Designed to trim thermoformed, blowmolded and rotationally molded parts

System Benefits

RoboTrim RT-1202 routing systems can be programmed to trim a variety of part sizes and shapes. State of the art software allows the robots to move quickly and accurately, while KMT's System Calibration features drastically reduce set-up and downtime.

Each system is equipped with safety features that remove the operator from the trimming area. This results in a more ergonomic operating environment and a reduction in workplace injuries.

Robot

Each RoboTrim RT-1202 router trimming system has two riser-mounted 6-axis KMT AccuTrim® robots, each with a 3 HP fan-cooled spindle and a FANUC R-30iC robot controller. FANUC Robotics' iPendant color teach pendants are also included to provide a user-friendly means to control the system, program parts and access documentation.



The RoboTrim RT-1202 router trimming system's 12-foot rotating table can hold up to 1,000 lbs. (approx. 453.5 kg) on each side. Shown above with optional RouterVac and touchscreen HMI.



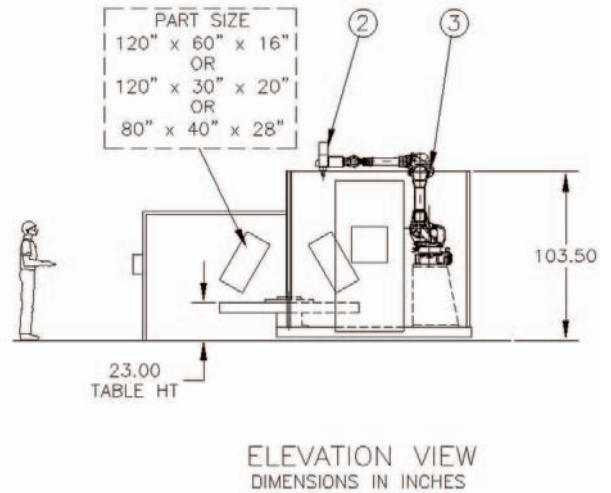
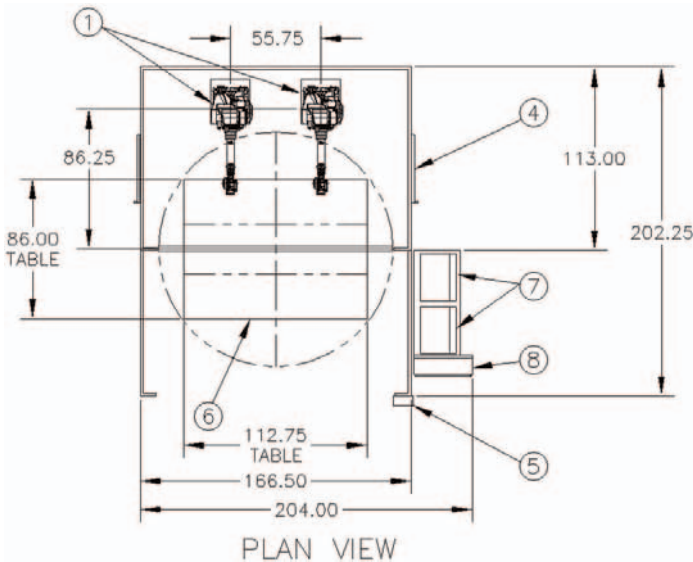
This side view of the RoboTrim RT-1202 router trimming system shows the two FANUC R-30iC robot controllers and a glimpse of the AccuTrim R-110 robots through the sliding side access door.

Software

System Calibration Tools allow for quick and accurate Tool Center Point identification and fast fixture changeover, while KMT's RouterWare™ application software makes robot programming quick and easy. If problems arise, FANUC's Collision Guard software will protect the robot and tooling in the event of a collision. Also, KMT's Remote Administration ability allows KMT System Technicians to troubleshoot issues via a phone line or ethernet connection.

System Structure

KMT's turnkey robotic systems are easy to install and maintain. The RT-1202's Cycle Start, E-Stop and Robot Start buttons are located conveniently at the operator position, while the safety fencing, light curtain system and steel enclosure keep the operator out of harm's way.



LEGEND :

- | | |
|---------------------------|-------------------------------------|
| 1. AccuTrim® R-110 Robots | 5. Operator Panel |
| 2. Routing Spindle | 6. Rotating Table with 12-foot Wall |
| 3. Steel Enclosure | 7. FANUC R-30iA Robot Controllers |
| 4. Side Access Door | 8. Controls Enclosure |

Optional System Features

- KMT/FANUC Accuracy Enhancement Tools with TCP bracket
- A variety of spindle options including single- or double-ended, 3 or 10 HP, or automatic tool change
- 5 or 10 HP vacuum pump for part hold down
- KMT's RouterVac high-powered vacuum system for part hold down and chip removal
- Part fixtures designed and built by KMT
- Saw blade in position sensor
- Fixture ID or Tag Reader to automatically call part program
- Touchscreen HMI
- Part programming assistance by KMT's skilled technicians
- KMT/FANUC TrimPro® offline programming software
- KMT training classes



An inside view of the RoboTrim RT-1202 router trimming system shows the two floor-mounted AccuTrim R-110 robots.

Part Length	Part Width	Part Height
120 in. (3048 mm)	60 in. (1524 mm)	16 in. (406.4 mm)
120 in. (3048 mm)	30 in. (762 mm)	20 in. (508 mm)
80 in. (2032 mm)	40 in. (1016 mm)	28 in. (711.2 mm)



*KMT Robotic Solutions.
Creating value through automation.*

KMT ROBOTIC SOLUTIONS

KMT Robotic Solutions Inc.
1255 Harmon Rd.
Auburn Hills, MI 48326 USA
Phone: (248) 829 - 2800
Fax: (248) 289 - 2750

KMT Robotic Solutions AB
Box 529
372 25 Ronneby Sweden
Phone: +46 (0)457 345 00
Fax: +46 (0)457 345 99

KMT Robotic Solutions Shanghai Ltd.
No. 251 Ri Ying Nana Rd., Waogaoiao Free Trade Zone
Shanghai 200131 P.R. of China
Phone: +86 (0) 21-5048-1965(218)
Fax: +86 (0) 2-5048-3965